

2024 Workshop on Nuclear-Environmental Engineering & Science Education

Driving/Parking Information

Driving directions and Parking Garage

25th Ave/Highland Parking Garage
2401 Highland Avenue, Nashville TN

Parking spaces have been reserved for Workshop participants on campus at Vanderbilt in the 25th Ave/Staff Garage located at 2401 Highland Ave, entrance pictured below.

A map is included with this email. Driving is white line; walking is bright pink line.



Due to construction many streets in and around campus are closed, please follow these instructions when driving to campus. Directional signage is placed along your route once on campus.

As indicated on the map, enter campus from West End Avenue, turning onto 25th Avenue South, continue on 25th Ave South, road closure will require you to turn left to Garland Avenue, once on Garland, take the first right onto 24th Avenue S and your first right again onto Highland Avenue. The garage entry pictured above will be on your left.

In the garage turn right at the second driveway, spaces on this level are available for you to park and signage will be in place.

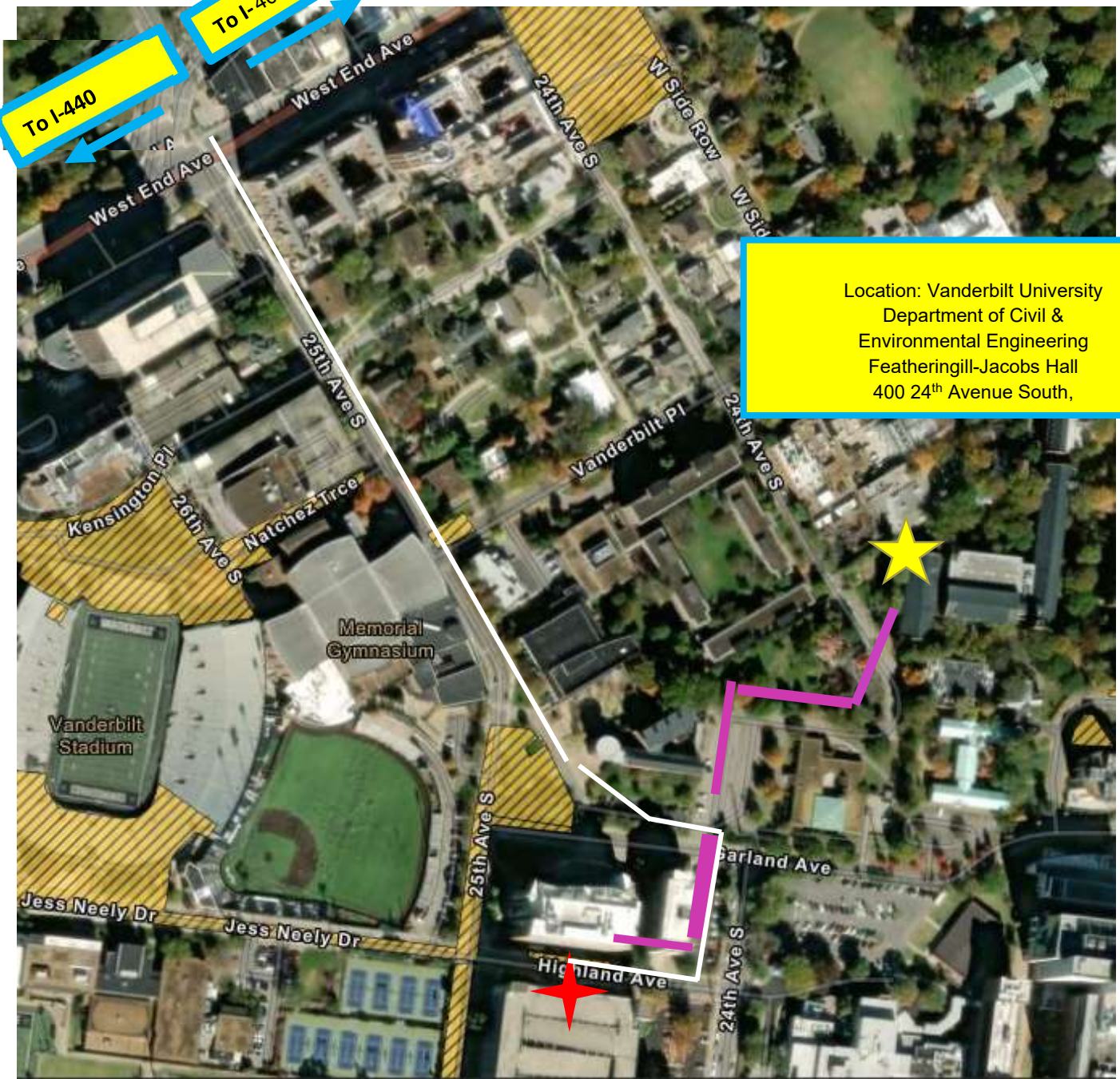
Please print the last page and place on the dashboard of your car. Spaces are reserved; however, we do want your vehicle identified as belonging to a Workshop participant.

Walking to Featheringill Hall – 400 24th Avenue S.

The walking path is indicated in **bright pink** on the map, directional signage is placed on the walking route.

(When leaving the garage turn right and walk to the corner, at the corner turn left onto 24th Ave. S, walk to corner of 24th and Garland, cross the street and turn right up the sidewalk. You will then take an immediate left on the 1st sidewalk, follow this to the corner take a right and follow this road.

Featheringill Hall is the 2nd building - entry is down the sidewalk on your right.)



Location: Vanderbilt University
 Department of Civil &
 Environmental Engineering
 Featheringill-Jacobs Hall
 400 24th Avenue South,



Engineering Building: Houses Jacobs & Featheringill Hall and is next to the Free Electron Laser building.



Walking path from parking garage to Engineering building.

Parking: located at the corner of Highland Avenue & 24th Avenue, (construction is indicated by the yellow striped areas on map).



Front of garage entrance pictured below.



Garage Address:
2401 Highland Ave, Nashville

2024 Workshop on Nuclear-Environmental Engineering & Science Education

(Please print this page and place on your vehicle's dashboard)

Reserved parking space Civil & Environmental Engineering

This vehicle belongs to a registered participant in the
2024 Workshop on Nuclear-Environmental Engineering & Science Education.

The Workshop is hosted by Vanderbilt Civil & Environmental
Engineering located in Featheringill Hall July31 – August 2, 2024.

For questions please contact
Julie James – julie.james@vanderbilt.edu