

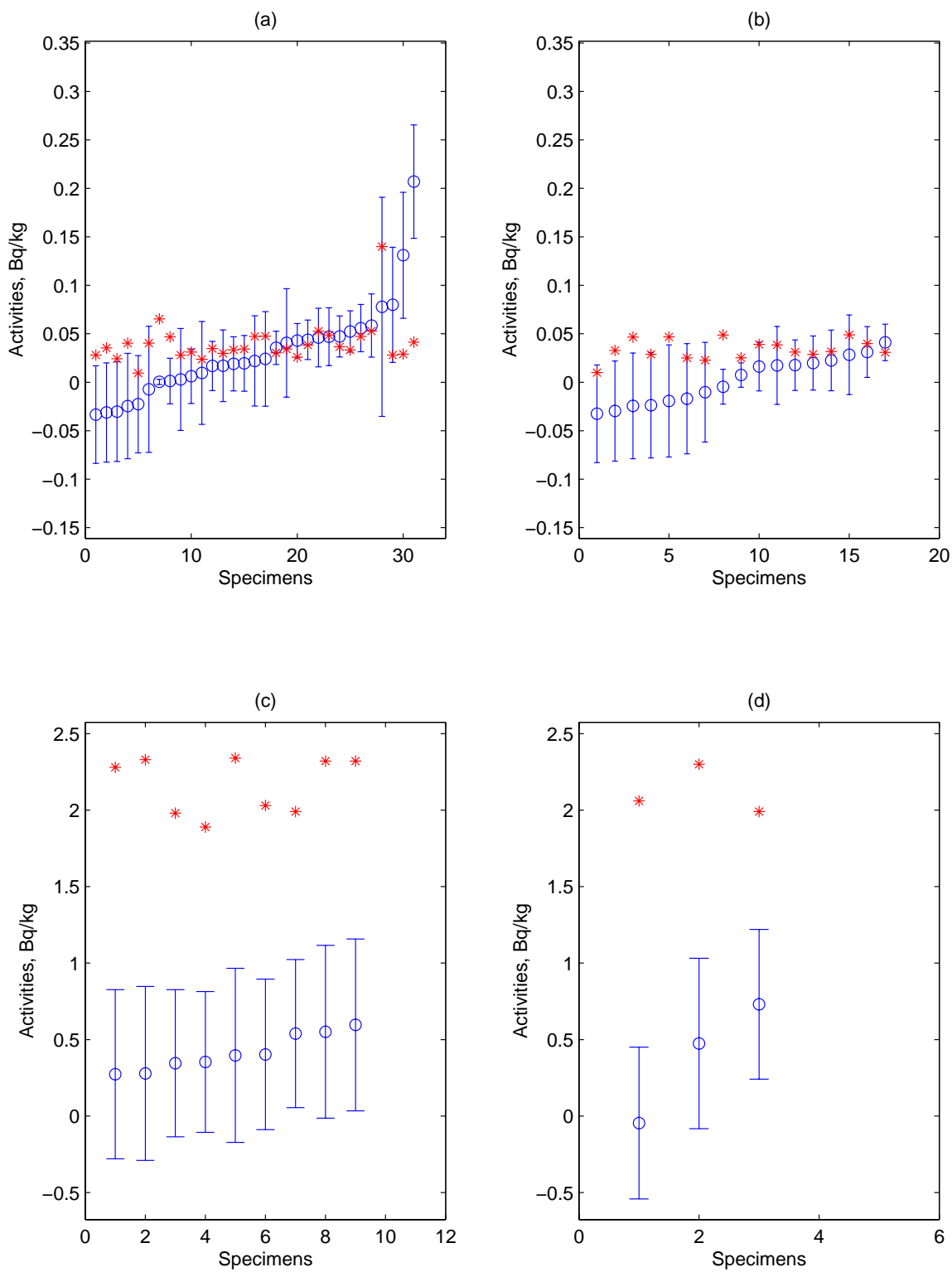
## Relationship Between Reported Values and Minimum Detectable Activities by Trophic Level

Vikram M. Vyas and Yuri Mun

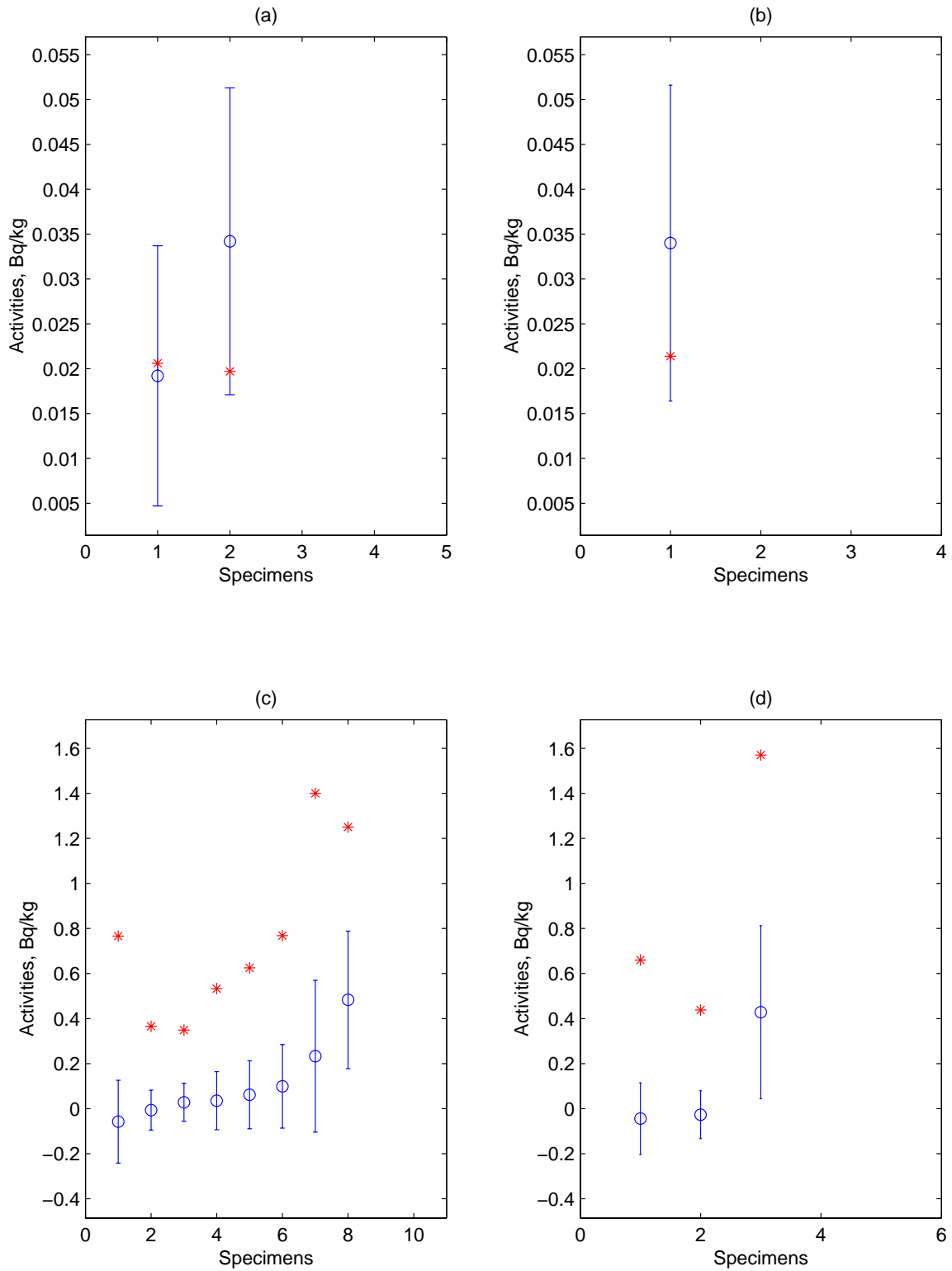
This appendix contains figures showing pairs of reported values and their corresponding minimum detectable activities (MDAs). On all plots, reported values and their one standard deviation uncertainty range are shown as **hollow blue circles with error bars** at top and bottom; for each reported value, the error bars show the value plus one standard deviation measurement uncertainty on top and the value minus one standard deviation measurement uncertainty at bottom. The corresponding MDAs are shown as **red stars**.

The list of species contained in each trophic level grouping are:

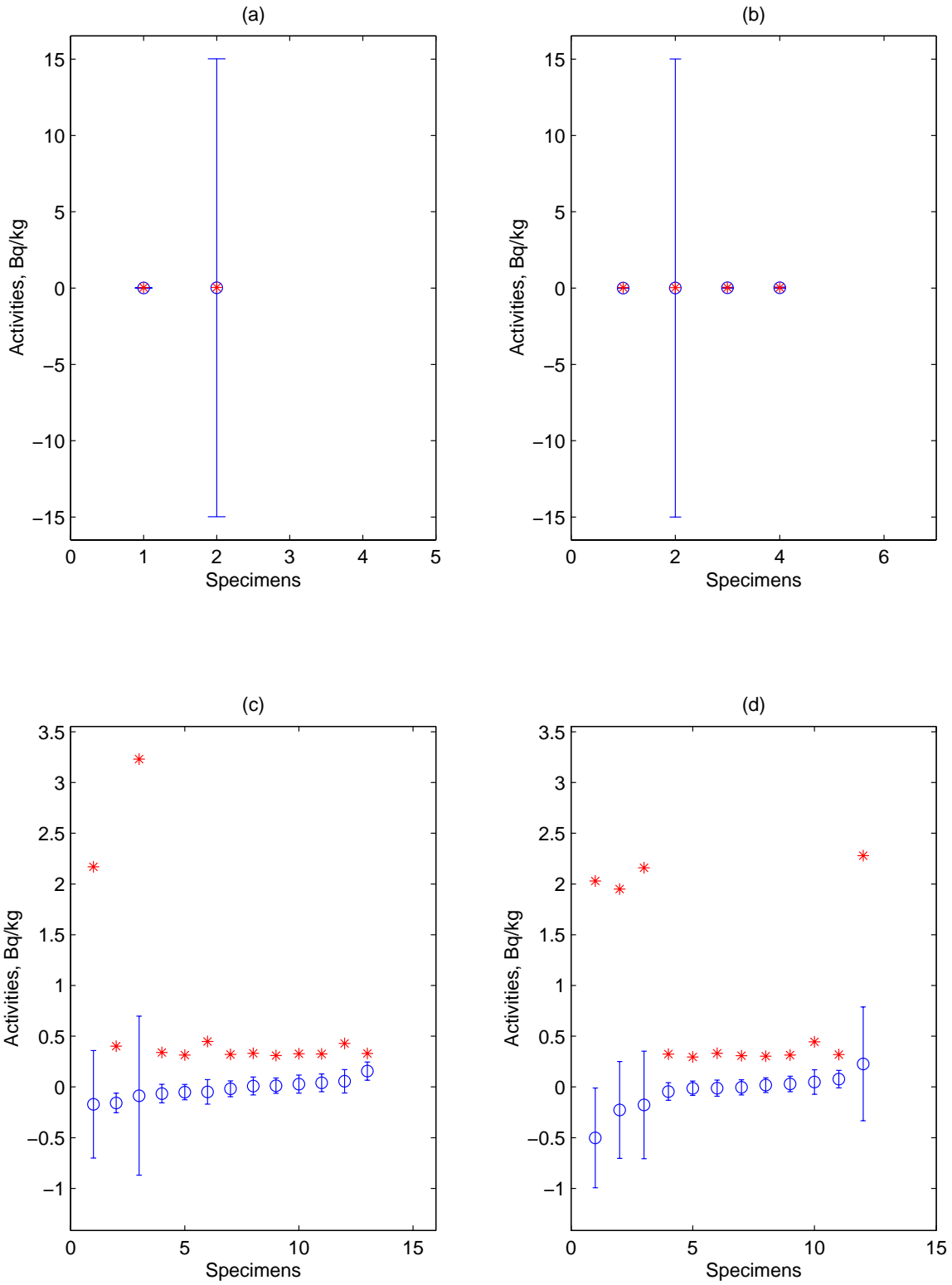
<b>PRIMARY PRODUCERS</b>	Alaria Fistulosa
	Alaria Nana
	Fucus
	Ulva
<b>GRAZERS</b>	Sea Urchin
	Rock Jingle
	Limpet (Chinese hats)
	Blue Mussel
<b>LOWER PREDATORS</b>	Dolly Varden
	Atka Mackerel
	Red Irish Lord
	Rock Greenling
	Yellow Irish Lord
	Black Rockfish
	Ocean Perch
	Common Eider
<b>HIGHER PREDATORS</b>	Gulls
	Pigeon Guillemot
	Tufted Puffin
	Walleye Pollock
<b>HIGHEST PREDATORS</b>	Octopus
	Bald Eagle
	Halibut
	Pacific Cod
	Sea Lion



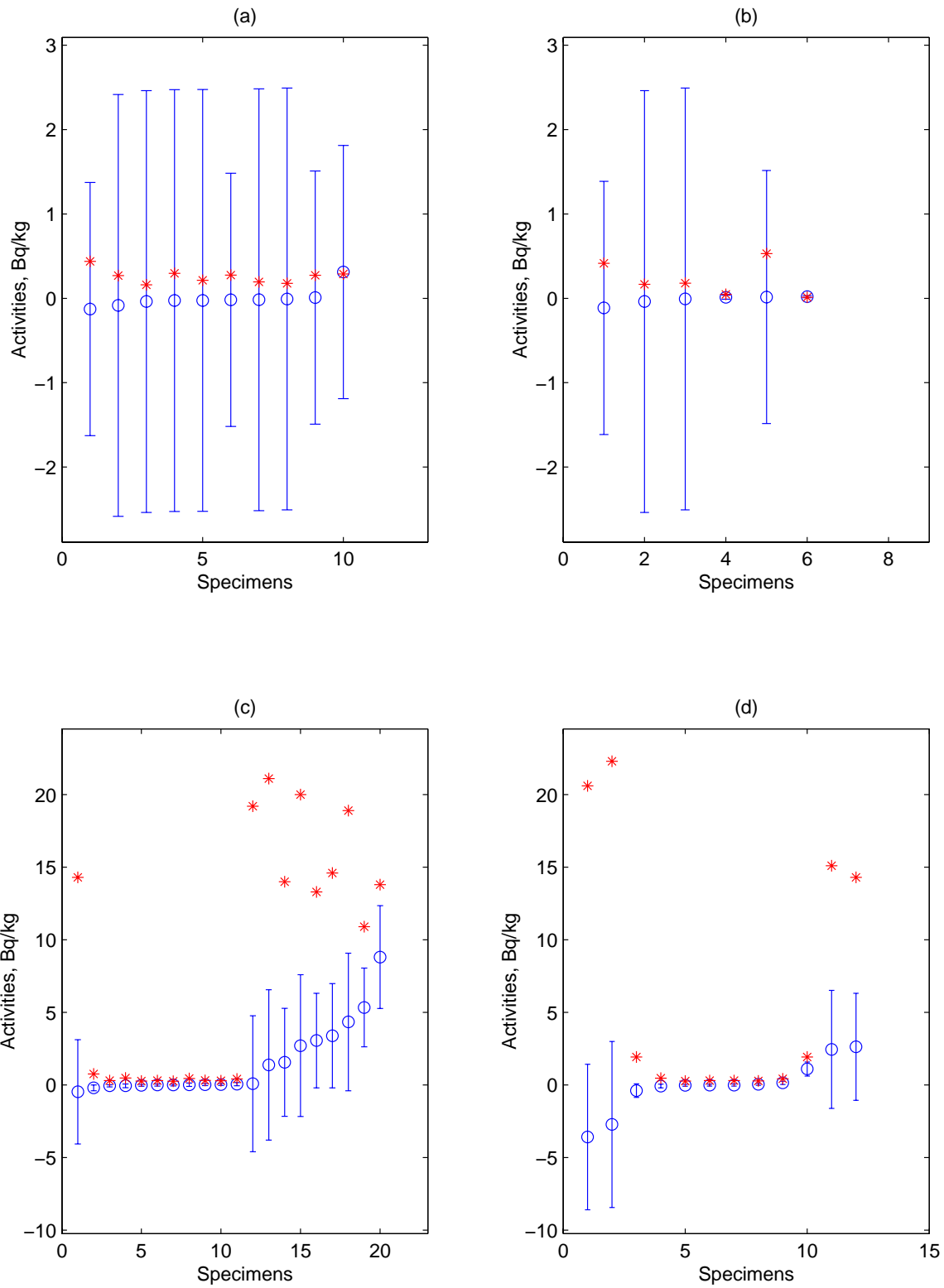
**Figure 1. Relationship of reported values to MDAs by lowest to highest reported value, for Primary Producers: (a-b) Pu-239240 for Amchitka and Kiska; (c-d) Sr-90 for Amchitka and Kiska**



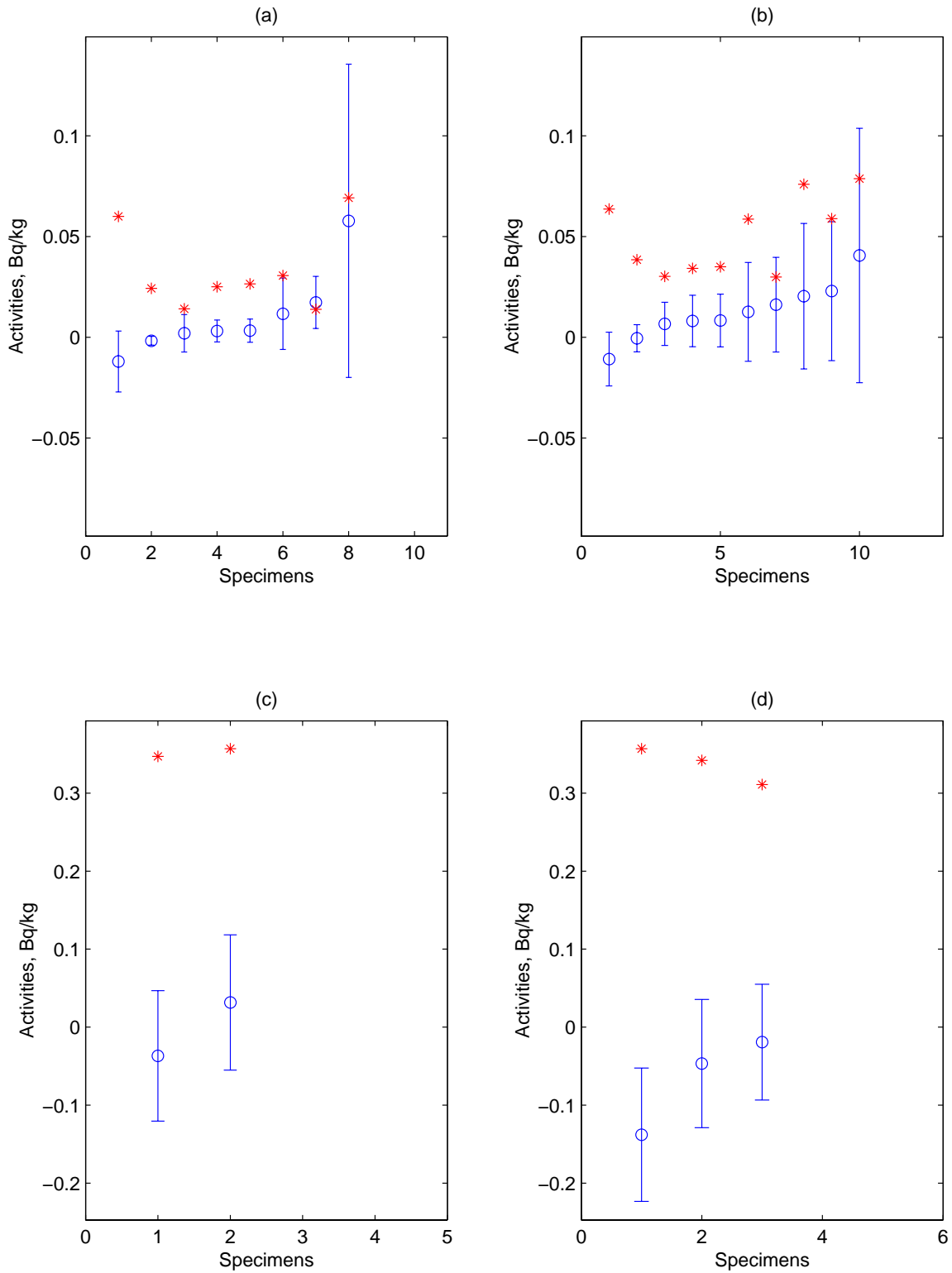
**Figure 2. Relationship of reported values to MDAs by lowest to highest reported value, for Grazers: (a-b) Pu-239240 for Amchitka and Kiska; (c-d) Sr-90 for Amchitka and Kiska**



**Figure 3. Relationship of reported values to MDAs by lowest to highest reported value, for Lower Predators: (a-b) Pu-239240 for Amchitka and Kiska; (c-d) Sr-90 for Amchitka and Kiska**



**Figure 4. Relationship of reported values to MDAs by lowest to highest reported value, for Higher Predators: (a-b) Pu-239240 for Amchitka and Kiska; (c-d) Sr-90 for Amchitka and Kiska**



**Figure 5. Relationship of reported values to MDAs by lowest to highest reported value, for Highest Predators: (a-b) Pu-239240 for Amchitka and Kiska; (c-d) Sr-90 for Amchitka and Kiska**

